



Milltech Incorporated World Headquarters

ADD: 619 Interstate Hwy30 Rockwall, TX 75087 USA
TEL: 972-767-4081
FAX: 972-739-9713

亚太地区

美国密超力（亚太）有限公司

地 址：香港九龙旺角花园街2-16号（好景商业中心1007MSC2683）
电 话：+00852-30150836
传 真：+00852-30109226
E-mail: sales@milltechcnc.com

区域经销商:



—— 密超力在中国 ——

FTV 系列

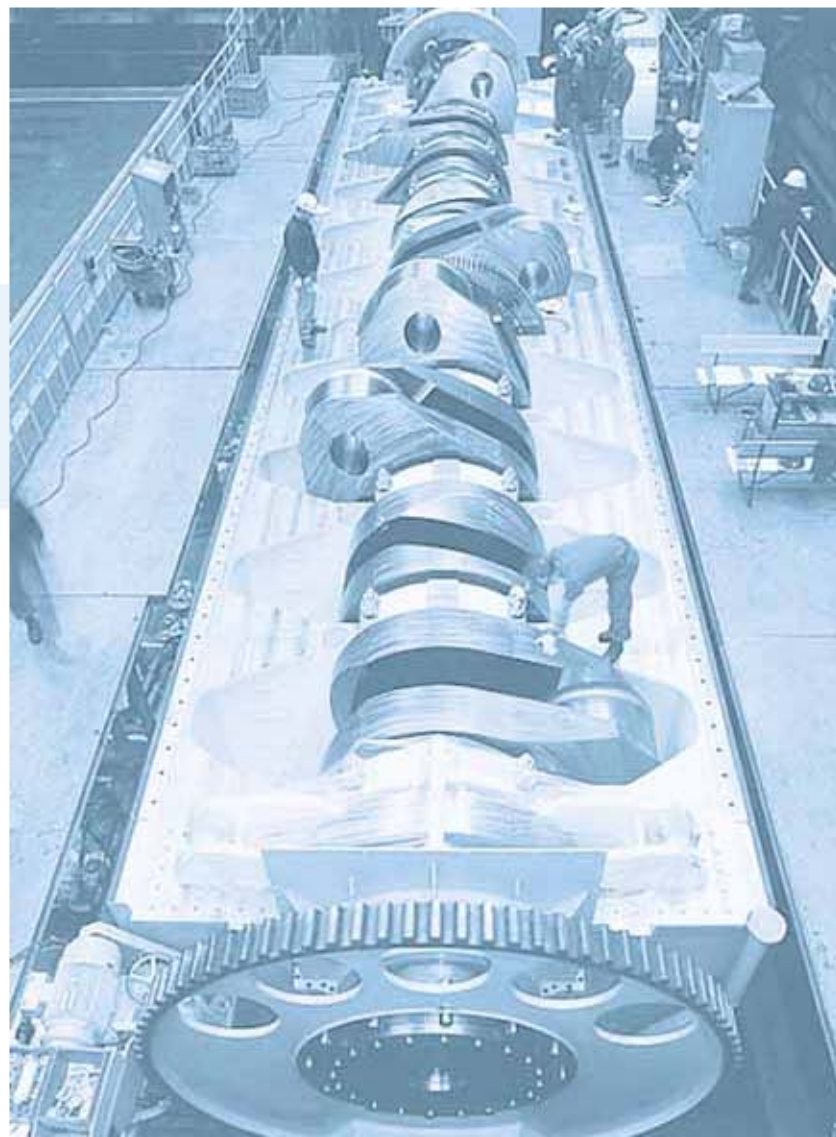
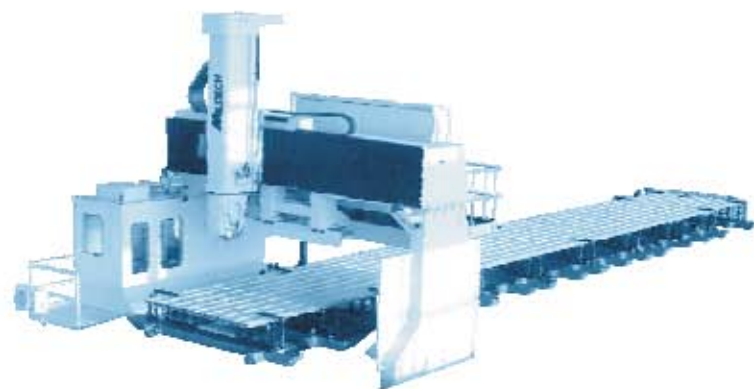


High Capacity, High Precision, Superior Performance

Militech is a globally recognized manufacturer of high performance CNC machinery. With facilities in the U.S. And Asia, Militech is uniquely positioned to provide world-class technology and performance to fast-changing markets. The FTV Series of bridge mills from Militech is one of our many high performance product lines serving customers who require heavy-duty machining capabilities.

碧组力 — 全球公认的高性能CNC机床制造商

在美国和亚洲都设有工厂，面对快速变化的市场，碧组力以其世界一流的技术和稳固的市场定位，在同行业中脱颖而出。FTV桥柱式龙门系列产品是碧组力众多高性能的产品中的一种，它主要应用于大型重切削加工领域。



FTV Series Bridge Mills

Our FTV series of bridge mills are suited for a wide variety of machining jobs. Available in table sizes up to 20 meters long by 5.2 meters wide, FTV machines have huge machining envelopes capable of machining the largest parts. The two support columns and cross girder have been designed using the latest FEM analysis in order to provide maximum stiffness and rigidity. The Z axis mechanism incorporates advanced engineering to provide tool rigidity regardless of the depth of Z axis travel. All ball screws and linear guides meet our strict standards for quality and performance. When used to their fullest capabilities, FTV machines pay for themselves in record time!

FTV 龙门加工中心

FTV动柱式龙门系列产品提供了很大的加工范围，工作台长可达20米，宽5.2米，垂直行程采用最新FEM先进的设计技术对其刚度、立柱进行分析，确保机床具有最大的刚性和稳定性，Z轴行程在任意位置，均可保证切削刚性，所有的球轴承和直线导轨都经过了严格的质量检验，我们是机床专家首选。



[1] Advanced engineering of the Z axis spindle head ensures superior rigidity regardless of the Z axis position [2] Strict quality control measures guarantee machine performance from Day 1 [3] Spindles employ high quality bearings and meet strict performance standards

[1] 无论Z轴行程在任意位置，均保持切削刚性 [2] 严格的质量控制程序从生产第一天开始 [3] 高质量的支撑轴承，严格的制造标准



[1] Heavy duty face milling is easily accomplished at any vertical Z position [2] High capacity tool changer (optional) [3] Multi axis milling heads available as options [4] Massive vertical columns and cross beam ensure stable operation during all types of machining operations

[1] 无论在任意位置，重切削面铣加工均可容易完成 [2] 可选配更多种换刀头 [3] 可选配更多轴加工头 [4] 巨大的立柱和横梁，在机床全方面加工状态下，确保机床刚性



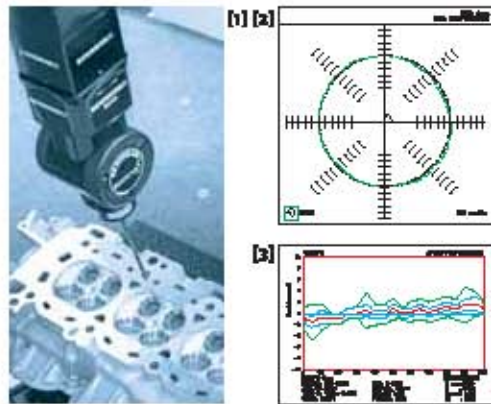
[4]

Quality

Machine performance is nothing without quality. This fact seems like common sense but there is a big difference between buying what you need and getting what you want! Every machine that Milltech manufactures goes through a rigorous set of quality control procedures to make sure that customers receive the long term performance that they pay for and expect.

质量

最有质量，最谈不上价格，常见的现象是：你看中的机床往往与你最想得到的机床存在着很大差距，在这一点上，我们愿意竭尽全力提供给你的机床的质量经过了严格的质量控制程序，由全部等满足你的要求，确保经久耐用。



[Close-up from left] [1] All critical components are rigorously checked using advanced measuring devices [2] Ball bar testing is standard for every machine [3] Accuracy is tested to ensure conformance to all product specifications

[1] 采用最先端的检测手段对加工零件进行检测 [2] 每一台机床都要经过严格的球杆测试 [3] 每一台每一台机床都要经过严格的精度测试

Technical Specifications 技术参数

FTV 系列

			FTV800	FTV200	FTV400	FTV200
X travel	X轴行程	mm	8000最大可至11000			
Y travel	Y轴行程	mm	2000	3200	4200	6200
Z travel	Z轴行程	mm	1400			
Spindle nose to table	主轴鼻端到工作中心距离	mm	600-2000 (可至3000)			
Distance between columns	门宽	mm	2850	3250	4250	6250
Table length	工作台长度	mm	8000最大可至11000			
Table width	工作台宽度	mm	2200	2800	3800	4800
Table capacity	工作台最大承载	kg/m ²	8000			
T-slot width	T型槽宽度	mm	28			
Accuracy	定位精度	mm	0.008			
Repeatability	重复定位精度	mm	0.008			
Spindle taper	主轴锥度		No.50			
Minimum spindle speed	主轴最低转速	rpm	6000/4000			
Spindle power (30 min)	主轴功率 (30分钟)	KW	28 (可至31)			
Max. spindle torque	主轴最大扭矩	NM	700/1080 (可至2000)			
Gear box ratio	ZF齿轮箱齿数		1:4/1:8 (可选)			
Ballscrew dia (X/Y/Z)	丝杠直径X/Y/Z	mm	80/50			
Rapid feed (X/Y/Z)	快速进给X/Y/Z	mm/min	10,000/12,000			
Maximum cutting speed	最大切削速度	mm/min	3000			
X/Y/Z servo motor power	X/Y/Z 轴电	KW	7/8			
Servo motor	伺服品牌		FANUC 或			
Resolution	最小输出单位	mm	0.001			
ATC type	刀库		刀臂式/碟式			
ATC capacity	刀库容量	把	80			
Maximum tool diameter	最大刀具直径/棒直径	mm	125/200			
Maximum tool length	最大刀具长度	mm	400			
Maximum tool weight	最大刀具重量	kg	20			
Power requirement	电力需求	KVA	85			
Machine height	机床高度	mm	6200 (可增高1米)			
Machine width	占地面积 (不含门)	mm	X轴行程+8000 × Y轴行程+1450			
Machine weight*	机床净重*	ton	70+	80+	100+	180+
Control system	控制基础		FANUC-18iMB/SIEMENS840D			

*Weight of machine will depend on final configuration
*机床重量取决于最终配置